

11 Point Henry Road Bremer Bay

Proposed Building

1 3x2 family home, Shed, Tanks and a separate small home to be run as Bremer Bay Bed and Breakfast.

This Guest home will sit beside our own and include 3 spacious bedrooms with 3 unsuits, a lounge for guests to relax with coffee and tea facilities. As of most traditional B&B's our guests will have no kitchen facilities so will dine with us for breakfast and eat out in the town for other meals.

The guest house will be able to accommodate a maximum of 6 people at one time and will be furnished with 2 Queen sized beds and 2 single beds.

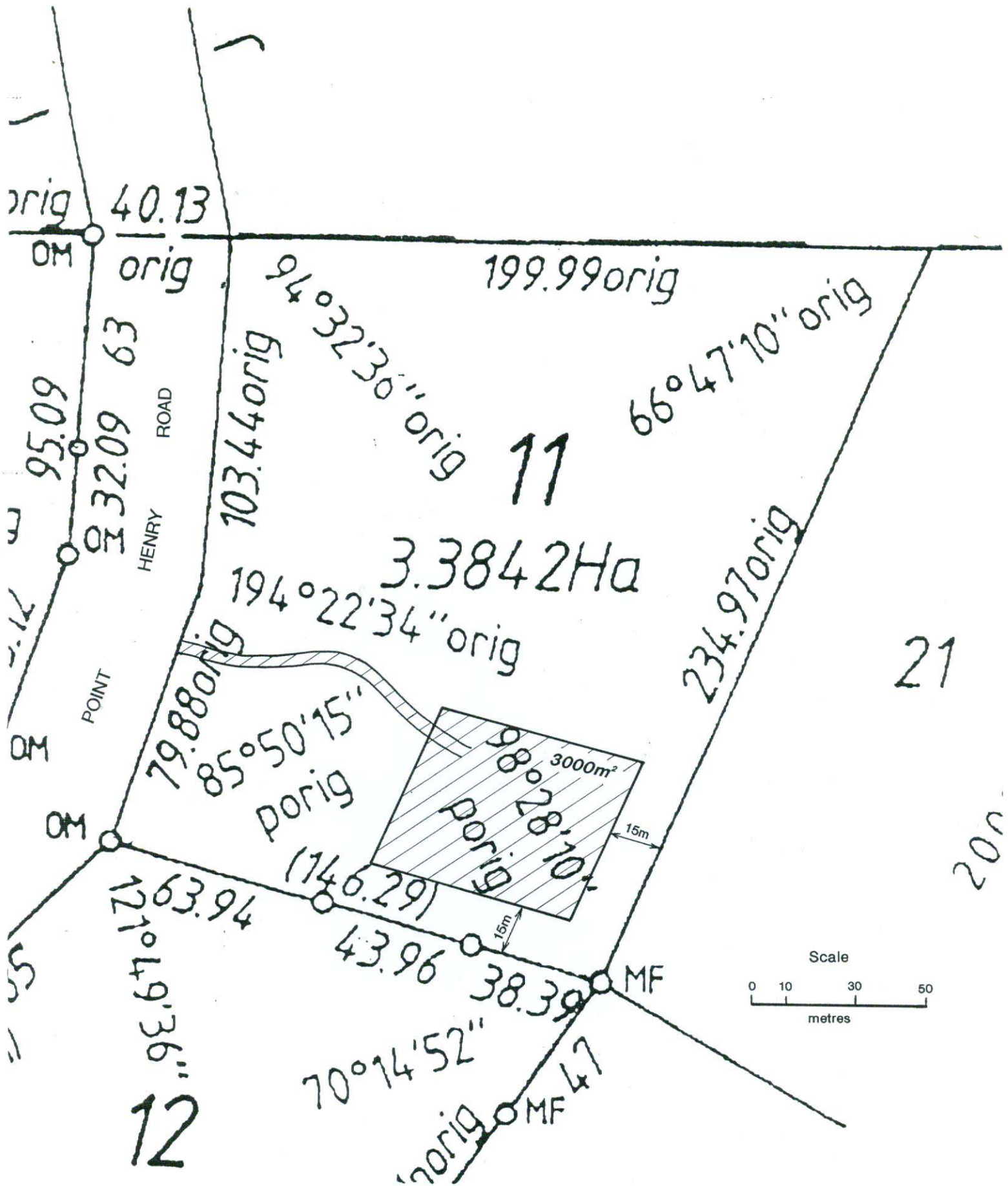
Disabled facilities will be provided with wheel chair friendly entrances, widened door-ways and bathroom with easy access showers and safety rails.

Both buildings will be 2.7 ceiling height with a Dutch gable colour bond rooves and verandas around. Weatherboard will clad the exterior to finish the homestead look.

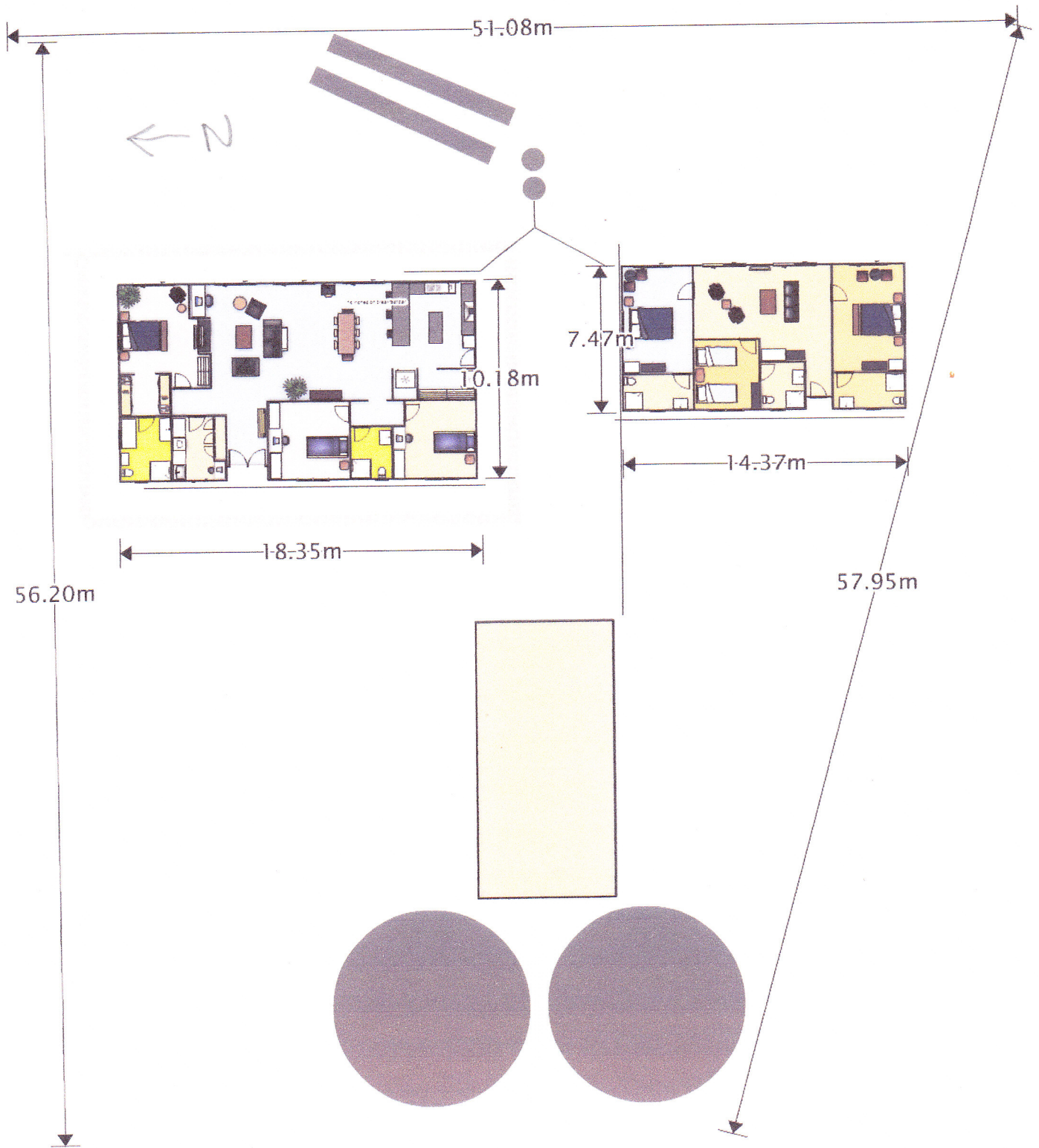
Shed will be 3.6 high with gable roof

Ample parking will be made available out the back of the houses for easy access through a rear formal entrance.

We feel confident with what is required in providing a high standard of accommodation. With our previous experience owning and running Bremer Bay Bed and Breakfast we are aiming for our new accommodation to be even better than before.



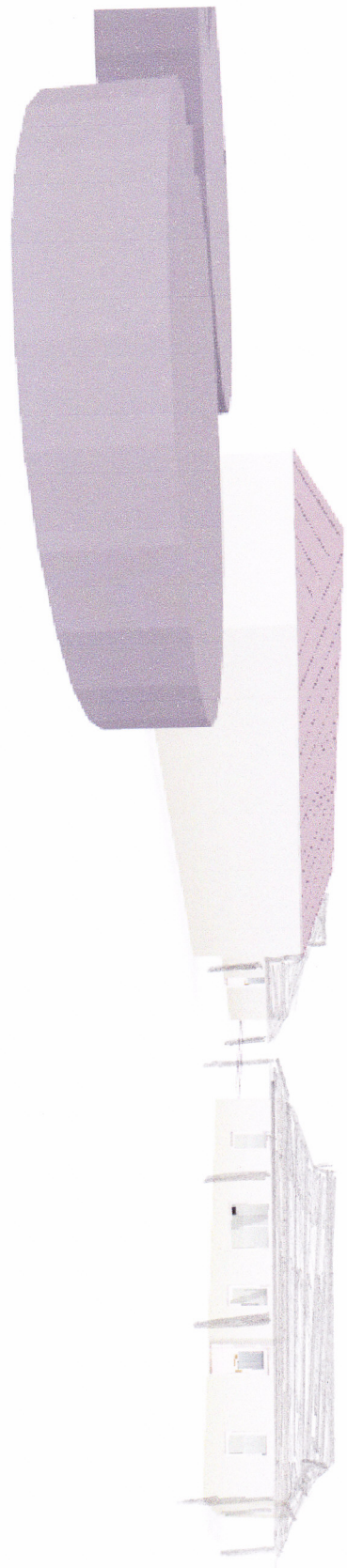




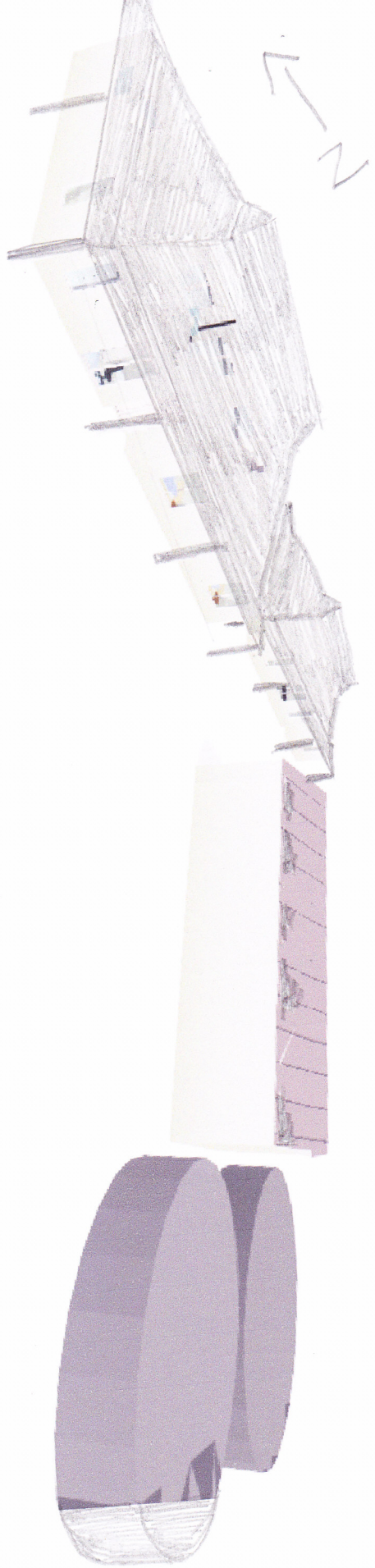
0m

20m

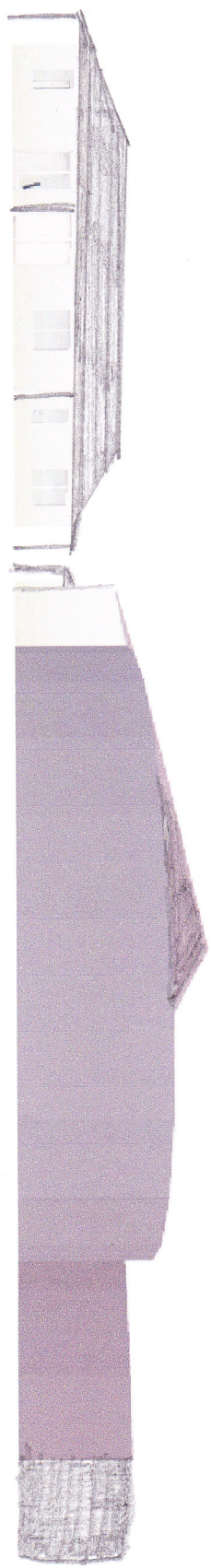
40m

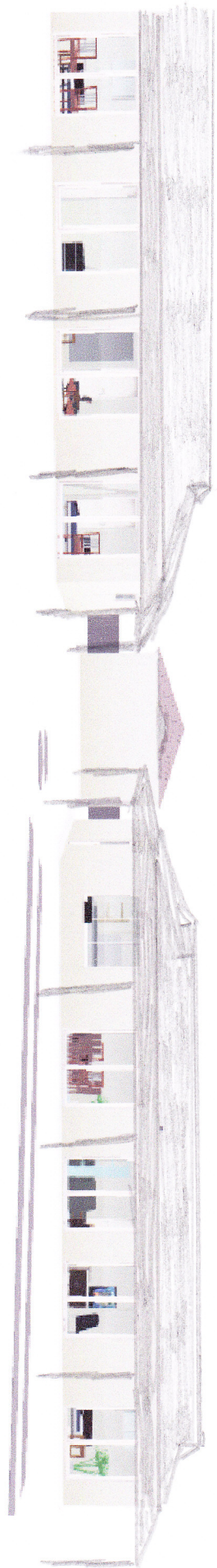


N
↗



↑
N





N →